



Inside this issue:

Remembrance Day	2
New Germany Elementary	3
Post Offices	4
Walden Volunteer FD	5
Health & Wellness Expo	6
P/M Museum	7
Nannie's Adventure	8
NG & A Outdoor Club	9
Ron's Photos	10-11
Clothing Swap	11
Garden Club	12
Livewires 4H	13
Lions Club	14
Boston Again	15
NG&AMC	16
MODL	17
Business Buzz	18
Christmas House Tours	18
NG Post Office	19
Tree Lighting	20
Christmas Festival	20
Movie Night	21
Wreath Making	21
Lively Munchkins	21
Countryside Christmas	22-23
Contact & Comments	24

**Community Events**

- Nov 11 Remembrance Day
- Nov 12 Turkey Supper
- **Countryside Christmas**  
**Nov 26 - Dec 4**
- Nov 26 Breakfast
- Nov 26 Christmas Tea
- Nov 26 Movie Night
- Nov 27 House Tours
- Nov 29 Lively Munchkins
- Nov 29 Lantern Walk
- Dec 1 Christmas Tea
- Dec 1 Tree Lighting
- Dec 3 Breakfast
- Dec 4 Christmas Festival
- Dec 25 Merry Christmas
- Jan 3 NGAPS meeting
- Jan 26 Pap Clinic



## Autumn to Winter 2016

This, our final issue of 2016, features Remembrance Day schedules and loads of information about our third Countryside Christmas celebration. We have again compiled a nine-day celebration of events in our area, our biggest effort yet. There are more events and more groups and businesses participating, proving what a vibrant community we are and an area which knows how to celebrate the season.

As winter creeps in, we hope you will join in many of the community events with your neighbours.

### *NGAPS Programs & Events*

**NGAPS Regular Meeting** the first Tuesday of each month. Everyone is welcome to attend. Check our web page for more details.

**Countryside Christmas** November 26th to December 4th. Various events, see pages 21-23.

**Children's Christmas Movie Night** November 26th, 6pm. Details page 21.

**Christmas House Tours** November 27th. By ticket only, page 18.

**Tree Lighting, Carol Sing & Snacks** December 1st, 6:30 - 8pm. Details page 20.

**Are you a Community Group or Organization in our area? Share your events, fundraisers or special occasions with us!**

**We will add it to our Community Calendar page.**

**We will put it on our Facebook page.**

**We will promote for and with you!**

**Any group or organization in our area can advertise their event on our sites at no charge. Please send listings to:**

**ng\_cap@ns.sympatico.ca, our FB page or drop off at Village Glassworks during open hours.**

**[newgermanycap.ednet.ns.ca](http://newgermanycap.ednet.ns.ca)**

**Check out our Facebook page!  
Follow us on Twitter!**



**The mission statement of New Germany Area Promotion Society is: "NGAPS will strive to create a sustainable and vibrant community where people and businesses are encouraged to thrive." We will achieve this mission by supporting communications and partnerships both within and outside our community.**

## *Remembrance Day Services*

### **Parkdale/Maplewood**

10:30 - Gather at the Cenotaph in Parkdale (in front of Emmanuel Baptist Church);

- National Anthem
- Placing of wreaths

11:00 - Two Minutes Silence  
 - The Last Post is played by Jeff Kaulback  
 - Prayer by Pastor Sam Jess  
 - Veterans are piped into the church by Piper Denis Stairs  
 - The remainder of the Remembrance Day Service follows in the church  
 - Special speakers are Alana and Lori Mosher re their visit to Vimy Ridge in France  
 - At the end of the Service the Veterans are piped from the church.

Following the service there will be a fellowship and refreshments at the Parkdale/Maplewood Community Hall (all are invited).



### **The Royal Canadian Legion, Branch 08-102 New Germany**

### **Week of Remembrance Events 2016**

**Sunday Nov 5<sup>th</sup>**

#### **Springfield United Baptist Church**

1100 Hrs. Service of Remembrance at the Cenotaph  
 Service in the Church

**Tuesday Nov. 8<sup>th</sup>**

#### **West Northfield Elementary School**

0950 Hrs. Legion, Auxiliary members & guest arrive  
 1010 Service in Gymnasium

**Wednesday Nov 9<sup>th</sup>**

#### **New Germany Elementary School**

1100 Hrs. Veterans visit classrooms

**Wednesday Nov. 9<sup>th</sup>**

#### **New Germany Rural High School**

1300 Hrs. Legion & Auxiliary members and guests arrive.

Service in Gymnasium

**Friday November 11<sup>th</sup>**

1030 Hrs. Parade participants gather at the New Germany Fire Hall

1045 Hrs. Form up Parade and March off

1100 Hrs. Service of Remembrance at New Germany Cenotaph, Epworth United Church

Service in the church.

1200 Hrs. Form up Parade and March back to the Fire Hall & Break off.

Following the parade the Legion Hall will be open to members and guests over 19 years.

Afternoon of friendship and camaraderie in the Legion clubrooms.

1700 Hrs. Social Hour

1800 Hrs. Banquet by ticket only.

**Dress code as per Legion By-Laws**

## *News From New Germany Elementary School*

It has been a positive start at NGES! We want all our students to feel welcome and happy at school. We are working to develop a culture in our building that shows this. We were thrilled with the incredible turn out at our Meet the Staff BBQ. A huge thank you to our local Freshmart for helping us to make that event possible. We also held a free Fall Family Fun night, which included families carving pumpkins that are now on display in our New Germany community or businesses. Thank you to Delong Farms for donating and delivering over 200 pumpkins - one for each student in our school! We recognize the importance of strong connections with our community. We are excited about the development of a strong Home and School association and are continuing to welcome new parents who would like to get involved. We are also in need of a community member to join our School Advisory Council. Please contact the school if you are interested.

We participated in the Terry Fox Run and had two musical presentations, one from the program Debut, and one from the LAMP association. Our students demonstrated amazing respect and appreciation as a respectful audience.

We are establishing clear goals for student learning in the areas of literacy and math. We know that these are essential skills that are necessary for their future success. Are you interested in volunteering for short periods of time to help students? We are looking for some extra hands soon. We strive to have high expectations for all students, as we know all children can learn! We are focused on learning and achievement from our Early Learning Program through to grade 6.

We are hoping to use our community room in our Early Learning Centre to greater capacity. If you have an idea of how this space could be used by the community please let us know and stay tuned for events that may be happening there. We are working on equipping the room with a Smartboard and LCD projector to expand the use of the room for meetings.

On a personal note, I am thrilled to be working with the students at New Germany Elementary. It's been a great start to the 2016 school year for staff and students. I look forward to continued success for all our students.

Sincerely,  
Mrs. A. Gladwin

### **New Germany Elementary School Outdoor Natural Play Space**

We are looking for play pieces that would "fit" with the beautiful outdoor space that the Early Learners affectionately refer to as The Park and for all our students to enjoy at NGES. Equally as important as being aesthetically pleasing, we endeavor to keep this project cost efficient and environmentally friendly. Most, if not all, of the necessary materials are upcycled and can be donated or sourced locally. A group of parent volunteers have expressed an interest in helping to construct the play pieces.

We would like to have such fun areas as a **Mud Kitchen** and a **Music Wall**.

We are looking for donations of **Loose parts** for the outdoor play space. Our goal is to maintain the natural look and feel of the space while providing increased opportunities for creativity, gross and fine motor development, social and emotional skill building and problem solving for the children.

Please contact the school for more information.



### **If you're thinking home Renovations or Improvements, call us first!**

renovations • additions • roofing  
• siding • interior • exterior

#### **RESIDENTIAL & COMMERCIAL**

Call or Fax: Wade and Patricia Joudrey  
299 Elmwood Road  
Barss Corner



**Phone 902-543-8288**

Fax: 902-543-8032 Cell 902-529-2501

**Honouring our Veterans**

November 11th



### More Post Offices of our Area

From Lunenburg County philatelist C Lloyd Tancock's collection. Do you live in a house that used to be a post office? Do you have envelopes, stamps or postcards from any of these post offices? If you have any details about any Lunenburg County Post Office he would like to hear from you. You can contact us (last page) or Lloyd at stampguy48@hotmail.com or (902)543-9110

#### Fosters

Between Sherbrooke Lake and Whetstone Lake, 14 kilometers northeast of New Germany, it was settled circa 1840 when a Foster family arrived from Aylesford. In 1848 David and Edward Kaulbach arrived from Bridgewater. In 1902 the name was changed to Parkdale.

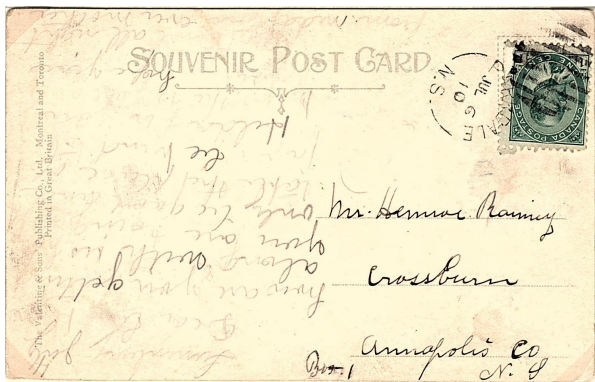
The Post Office opened at least as early as July 1, 1868 and stopped using this name on June 1, 1902. Henry Foster was the first postmaster, followed by George W. Foster and Herman Foster.



#### Parkdale

Parkdale went by earlier names of Upper Foster, Foster Settlement and Falkland. The name was changed to Parkdale in 1902 by an act of Parliament. The Foster family settled here in 1848, relocating from the Aylesford area.

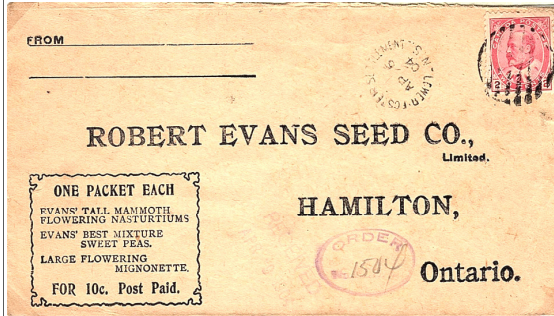
The Post Office operated under this name from June 1, 1902 until it closed October 31, 1917. The postmaster at the time of the name change and until closing was Herman Rafuse.



#### Lower Foster Settlement

Four kilometers west of the lower end of Sherbrooke Lake, it was earlier known as Falkland and later became Maplewood, named for it's location near Foster's.

The Post Office opened April 1, 1892 and ceased operation under this name on August 1, 1907

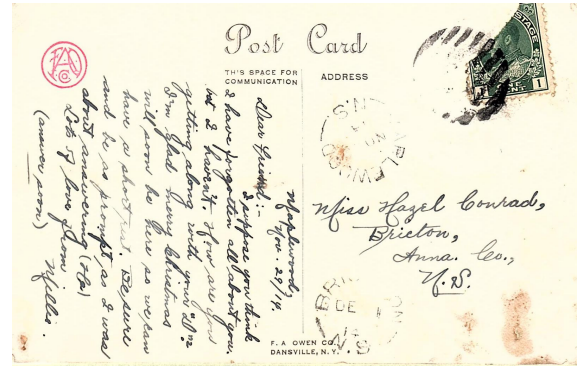


when it changed to Maplewood. The postmaster was Joseph Wentzel.

#### Maplewood

Formally known as Falkland and then Lower Foster Settlement, the name changed in 1907 presumably because of the abundance of maple trees in the area.

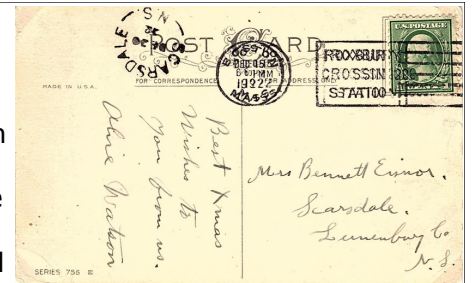
A Post Office under this name operated from August 1, 1907 to March 16, 1916. The only postmaster, under both names, was Joseph Wentzel.



#### Scarsdale

About 13 kilometers northeast of New Germany, on the road to Maplewood/Parkdale it is believed to have been named for Scarsdale, near New York City. An 1883 grantee of land grant here was Edward James.

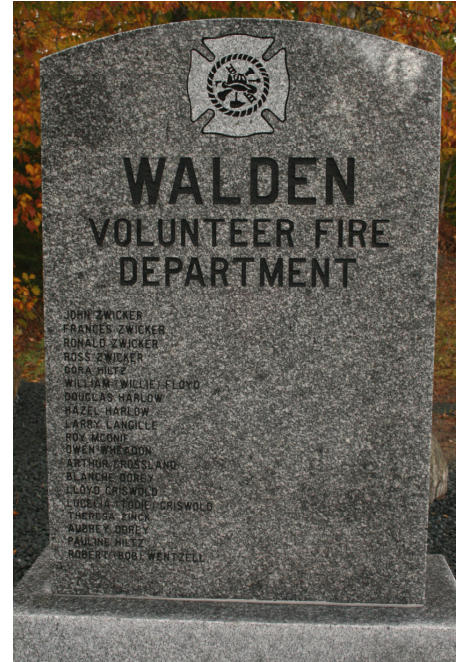
The Post Office opened on April 1, 1899 with Edward T. Hawksworth as postmaster. Caleb Webber and Adam Webber were successive postmasters until it closed on November 15, 1933.



## Walden Volunteer Fire Department

At their annual banquet on October 22nd the Walden Volunteer Fire Department unveiled a monument in memory of those who have served the department. The dedication reads: *Dedicated in honour of the men and women who, in the course of their lives, have contributed to the community through their involvement with the Walden Volunteer Fire Department.*

"How do you know how far you have come if you don't remember where you started" Chief M. Langille.



## WORKPLACE SAFETY TRAINING



Patty Joudrey's Education & Training Services  
194 Dufferin Street, Bridgewater, NS B4V 2G7  
(902)527-1608 or (902)541-0719 cellular  
[www.pattyjoudrey.weebly.com](http://www.pattyjoudrey.weebly.com)

email: [pattyjjoudrey@gmail.com](mailto:pattyjjoudrey@gmail.com)



### Training for Healthcare Providers

- \*Provide an Overview of the Occupational Health & Safety Act
- \*How to Establish an Occupational Health & Safety Committee + Roles & Responsibilities of the Committee/Safety Rep.
- \*First Aid + CPR
- \*Critical Incident Stress Debriefing/Defusing
- \*W.H.M.I.S. 1988 & W.H.M.I.S. 2015/GHS
- \*Non-Aversive Behavior Management
- \*Individual Program Planning (I.P.P.)
- \*Crisis Intervention Training
- \*Medication Awareness
- \*Basic Principles & Practices of Personal Care
- \*Create Fire & Emergency Plans for Special Care Facilities & Other Businesses
- \*Food Safety Training \*Fire Safety

\* Will do Specialized Training for Specialized Groups

The company provides one-on-one training, small groups and large groups.

If there is specific training you require and you do not see it on my list, please contact me and I will try to access this for you. **Training hours and training days are flexible.**

**"Dedicated to Quality Education & Training, With a Human Touch"**

### Training for Construction Industry

- \*Provide an Overview of the Occupational Health & Safety Act
- \*How to Establish a Joint Occupational Health & Safety Committee + Roles & Responsibilities of the Committee/Safety Rep.
- \*First Aid + CPR- Emergency, Standard & Marine
- \*WHMIS 1988 & W.H.M.I.S. 2015/GHS
- \*Principles of Loss Control
- \*Accident & Incident Investigations
- \*Hazardous Identification & Control
- \*Safety Audits (Internal/External)
- \*Industrial Hearing Testing
- \*Fall Protection
- \*Confined Space
- \*Lockout/Tagout
- \*Fire Safety



## 6th Annual Health & Wellness Expo



Wow, another great Expo! With 20 sponsors to help put this Expo together, and to help with advertising costs, this Expo has gained a lot of traction since we first started 6 years ago.

As in the past, there was no charge for a booth or to visit the Expo. However, all booth holders and Expo visitors were encouraged to donate to the Journey Room. Unfortunately, a wonderful lady, Jody LeFave, passed away after a long battle with cancer. Jody was the person who named the Journey Room. She was also a member of the New Germany community. For these reasons, all monies raised, \$451.05, will be donated in her memory, from New Germany Area Promotion Society.

With 67 booths registered, even with a couple which had to drop out, we had the largest number ever. Floor space was at a premium and several booth holders shared space. However, there was still a good amount of space for all the community members who came to visit the booths.

Again, this year we put on the Expo as an educational event. All booth holders were asked to identify at least 1 of the 12 Determinants of Health that they represent. The 12 Determinants are available on the Public Health Agency of Canada website @ [www.publichealth.gc.ca](http://www.publichealth.gc.ca)

Next year I hope to see many of these booths back again, but also some new ones. Each year I have been lucky to be able to have contact with amazing groups or companies that want to be a sponsor of the Expo or have a booth in the Expo.

I hope many who read this had a chance to come over and enjoy Expo 2016. Thanks for your support!

Greg Selig  
Chair, New Germany Community Health & Wellness Expo 2016



# THANK YOU

**Thank you to the people of the Municipality of the District of Lunenburg for your support and vote of confidence. This is an exciting time to be living in our area and I am honoured to be elected as your Mayor.**

Thank you to my family, friends and the volunteers who supported me throughout this election.

Sincerely,



*Carolyn*  
**BOLIVAR-GETSON**

# Mayor

Municipality of the District of Lunenburg

# What's at the Museum?



## Coffee Grinder

By the mid 1800's various coffee grinders were seen in homes in Europe and America. The whole coffee beans were ground to facilitate the brewing process. The fineness of the grind strongly affects the brewing.



The Parkdale Maplewood Community Museum is closed for the season, but will reopen in spring 2017.

# Thank you

To all the people from my community of New Germany and beyond. I am sending this note to say thank you.

It has been a long and difficult road since Dylan's first operation last February. During our most recent stay at the IWK Health Center it was deemed necessary for a third surgery.

The outpouring of support we have received from so many has been nothing short of overwhelming. There doesn't appear to be a justified way to fully express our sincere gratitude. Having lived in this rural area my entire life I would not have changed it for the world. It has opened its' arms in such a way that will never be forgotten. How this community comes together in times of crises amazes me. You all should be very proud of your concerns and efforts.

To name those who must be thanked would be endless, so I trust this message will find you all. From the bottom of my heart I thank you all once again.

~Jeff and Dylan Russell

## Free advertising

for your community event, fundraiser or special occasion on the NGAPS community website.



Send details by email  
ng\_cap@ns.sympatico.ca




**Eva Cook**  
Homestay Coordinator



Nova Scotia International Student Program (NSISP)  
South Shore Regional School Board

130 North Park St.,  
Bridgewater, NS, Canada B4V 4G9  
902.521.8532  
ecook@ssrsb.ca  
www.nsisp.ca  
facebook.com/ssrsb.nsisp.ca

*Municipality of the District of Lunenburg*



**Cathy Moore**  
Councillor - District 5

104 Zwicker Mill Road, PO Box 137, New Germany, NS B0R 1E0  
(902) 644-2922  
kitcatt@ns.sympatico.ca



# Charlie's Pizza & Burgers

**Special**  
with Coupon only

16" 3 regular topping Pizza  
\$9.99 + tax  
or 16" Garlic Finger  
\$9.99 + tax

Pick up only  
Expires Dec. 10, 2016

## *Nannie and Company Out For The Day*

~ Alice Wile

It was a bright and sunny morning with the promise of sultry temperatures to come as I headed out with my two adventurous companions. What interesting places could we find in the nearby town to explore on a few hours outing?

The sign said 'No Parking, Private Property'. The parking lot of a vacant business, and they didn't want anyone parking there to take in a local attraction? I'm sure there are liability reasons for the sign, but hey I'm not going to sue anyone if I roll my ankle in a divot, and besides, I'm not going to linger that long.

As we approach the view of what was supposed to be a fountain spewing great streams of river water, we see that the fountain is not working and there appears to be some workmen trying to correct the problem. Umm this is the LaHave River, what do you suppose could be plugging up the fountain? We watch as several attempts are made to correct the problem. Did you know that the fountain is controlled by a little box on the East side of town? A signal from the workmen in a vessel that looks like a scaled down version of a party boat, and the switch is flipped once more. Beautiful sprays of liquid shoot up and fan out in all directions. The workmen head for shore, but are once again called back to the fountain when it abruptly shuts down. OK, not the adventure we were looking for. On to the next stop which feels like it should be lunch. Having moved on to our chosen location, we settle in to enjoy our sandwich and drink when a special guest arrives. We are greeted with such enthusiasm and gusto that we are completely taken by surprise. Madam Duck has joined us and had we invited her to do so, I believe she would have sit on the bench beside us. Intently staring at both my young companions as if politely asking for them to share their lunch, she made no aggressive move to steal a crumb. As my youngest companion put it, "wow, lunch with a duck".

Time to move on with our adventure. We follow the river to the ocean and explore several little known entries to the ocean shore. A few treasures as we walk the sometimes rocky shoreline: a bit of beach glass, some common shells, a discarded cover to a sandwich box, the severed head of a haddock, no, no girls, that is not a treasure, lets leave that for the sea gulls. Two ladies in lawn chairs, looking out to sea, eye us suspiciously. It's a small beach and, until we arrived, they were the only two humans to be seen. Leaving the two ladies, and the severed head, we move on to our last stop. Miles of beautiful smooth beach rocks form a wall between the ocean and the marshland. We pick our way over the rocks and are greeted with miles of sandy beach. I've been here many times before, but wanted to share the experience with my two young companions. We explored, took pictures, wiggled our toes in the sand and left inukshuks to say, 'we were here'.



### **Cathy's Beauty Salon**

104 Zwicker Mill Road,  
New Germany  
Open Mon.-Wed.- Fri. - Sat.  
Phone 644-2922  
Will do house calls.



**New Germany &  
Area Lions Club**

*Serving our communities  
since 1985*

### **LANGILLE'S CARPENTER SHOP**

Manufacturers of:  
Windows - Doors - Mouldings  
Lathe Turning Included  
Newel Posts - Veranda Posts - Balusters  
**Phone: 902-644-2082**

Box 23  
Barss Corner  
BOR 1A0

**Jeff Langille**



## New Germany & Area Outdoor Recreation Club

The New Germany and Area Outdoor Recreation Club start-up was a success!

The club provided participants with the opportunity to try canoeing in October and looks to get into some fall hiking and archery in November. All events are open to the public and all ages and capabilities are encouraged to come out. The club is looking for active volunteers that can help out or even lead club events. Check out our Facebook page for event information and times, or contact Geoff Marshall at (902) 802-6269 for more information.



### Barss Corner Kubukwai

**Ladies Judo** Thursdays 7:30 to 9:00pm

**Judo for Everyone 14 years +**

Mondays 7:30 to 9:00pm

Your first two classes are free!

For more information:

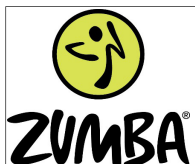
Blaine Moffatt 902-644-7176

760 Farmington Road



Read this newsletter in colour on the web @ <http://newgermanycap.ednet.ns.ca>

Also available at New Germany Freshmart, Mader's Clover Farm Supermarket, Village Glassworks, Bordens in the Woods, Tammy's Country Stop and other locations.



**Classes** every Thursday night @6:30pm, NGES Gym  
- \$5.00 per class  
Ages 12 and up.

**Zumba Gold** Fridays @10:30am  
(contact for location)

For more info, contact us

**Holly** @ 902-523-0488 **Kayla** @902-212-2132

Find us on Facebook **Zumba in The 644**



**RESIDENTIAL / COMMERCIAL**

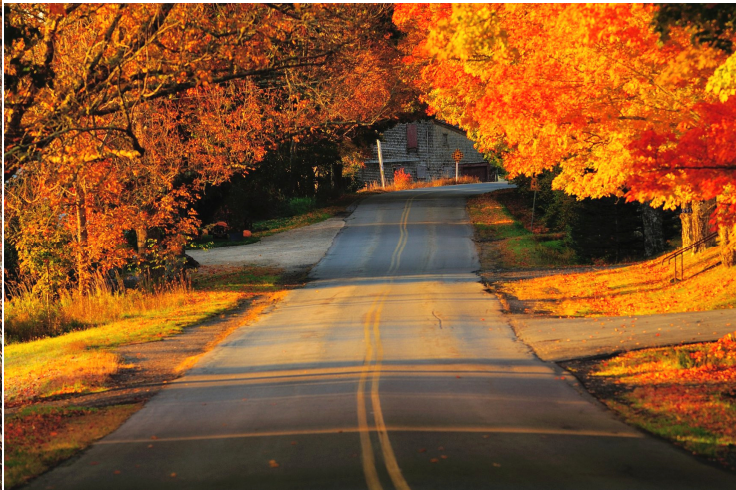
PLUMBING \* HEATING \* VENTILATION  
WATER TREATMENT

NEW INSTALLATION \* MAINTENANCE  
SERVICE \* REPAIR

**24/7 EMERGENCY SERVICE**

**902-644-2303 \* 902-298-9543**

Do you have a story about a school in your community? For many, these buildings were the heart of the community. We would be interested in having more stories about the one and two room schools which used to dot our countryside. Get in touch, contacts on page 24.



## DIETRICH FAMILY DENTISTRY

is proud to welcome  
**KALEIGH WAGNER**  
 to our team!



**Kaleigh** is from New Germany, where she graduated from New Germany Rural High School in 2012. She attended Dalhousie University, then went on to study Dental Hygiene at Oulton College in Moncton, New Brunswick. Kaleigh earned her Diploma in Dental Hygiene in June of 2016. We are so pleased to have her bright, smiling face on our team. She is highly skilled and trained in all aspect of dental hygiene which ensures you receive optimal care.

**WE WELCOME NEW PATIENTS!**  
 (902) 644-2957

### A correction from our last newsletter

In our Local Experiences to Experience Locally column we erroneously stated that Camp Kadimah is open to the public in their off season. In fact Camp Kadimah is private property only open for their camping season and rentals. For more information about the Camp please visit their website. [www.campkadimah.com](http://www.campkadimah.com)

**South Shore Public Library**  
**Mobile Library**



is at New Germany Freshmart every Tuesday from 3:00p.m. to 6:00p.m. A library card is free and so is using the library.

## Fall in our area

All photos ~Ron Smith



### Children's Clothing Swap!

November 14-22nd - Drop off clean, gently used children's clothing in the Early Years Centre at NGES

November 24th - For \$2 stuff a grocery bag full of new-to-you clothes

Open during Parent Teacher visits. Proceeds to the Early Years Program

All left over clothing will be donated to other organizations.

**CHILDREN'S CLOTHING ONLY** (please no books, toys, etc).



# CREDIT UNION

# LAHAVE RIVER

The **IMPACT** we have on the **ENVIRONMENT** is increasingly **IMPORTANT**  
**ECO-GREEN HOME LOANS\***

#### Features:

- Interest rate at **prime** + 1%
- Flexible repayment terms
- No pre-payment penalties or application fees
- Terms of 1 to 5 years
- Minimum loan amount of \$5000.00

#### Reduce your Environmental Footprint through:

- Insulation Upgrades
- Lighting Efficiency
- Solar Equipment
- Geothermal Heating
- Heat Pumps
- High Efficiency Wood or Pellet Stoves
- Energy Star Windows and/or Doors
- Energy Efficient Appliances
- Remediation of Malfunctioning Septic Systems
- Ventilation and Drain Water Heat Recovery
- Air Sealing

Call **Tim** at **LaHave River Credit Union** to learn more and apply for your **Eco-Green Loan** today: **902 543-3921**

Visit us at: **29 North Street, Bridgewater** or [www.LaHaveRiverCreditUnion.ca](http://www.LaHaveRiverCreditUnion.ca)

\*OAC, Some conditions apply. Rates are subject to change without notice. Refer to Efficiency NS for product eligibility. <https://efficiencyns.ca>

# New Germany Garden Club



The Club participated in the New Germany Health & Wellness Expo at NGRHS on Oct 26th with our Spin the Wheel, answer a question and win an apple contest. The questions, of course, pertained to gardening. Often the answers given were correct, but if not the contestants could be inventive.

The Garden club will soon be filling the three community planters with their winter colours. Watch for them to change from reds, pinks and yellows to winter green.

If you are interested in finding out more or participating in any garden club activities please contact our president Sandra Matchett @ 644-2740.



**NGAPS** maintains our community website, publishes this newsletter, organizes the New Germany Health & Wellness Expo, Countryside Christmas and other community events. Please consider joining us so we can do even more for our community!

## Lorraine's Beauty Salon

4320 Lower Branch Road  
Stanley Section, New Germany



### Family Hair Care

902-644-3373



69 Wentzell Drive  
Bridgewater, NS B4V 0A2  
1-888-252-2217  
www.ssrbsb.ca

**Elizabeth Crossland**  
School Board Member

Phone: (902) 543-3733

Email: [ecrossland@ssrsb.ca](mailto:ecrossland@ssrsb.ca)

# NEW GERMAN PLUMBING & HEATING

**SALES & SERVICES  
WATER CONDITIONER  
HEATING SYSTEMS  
PUMPS**



**PLUMBING FIXTURES &  
MATERIALS**



**FREE ESTIMATES**



**EMERGENCIES**

# 644-2579

**WHYNOT ROAD**

**Email: [ngpnh@msn.com](mailto:ngpnh@msn.com)**

# November is 4-H month!

~Adrianna Langille

Each November 4-H members, leaders and families across Canada participate by showing their 4-H colours, the colour of the clover and a visual symbol of 4-H. Livewires 4-H club is located in the Parkdale/Maplewood area. We meet the second Wednesday of every month starting at 7pm at the hall. Currently Livewires has 40 plus registered members and Cloverbuds.

Club members range from nine years old to 21, with a Cloverbud program offered to members seven and eight years old. As with most non-profit organizations that work to enrich the lives of children in the community, 4-H relies heavily on volunteer leaders to keep the program going.

We are fortunate to have an abundance of wonderful leaders who have been with the organization for a long time. Leaders are community members who want to share their skills with our youth community in various communication, leadership and project work.

Our members put a great deal of time and energy in individual projects each year. For a complete list of projects that you can take in 4-H, check out the Nova Scotia 4-H website. In grade 10 you can even use 4-H as a high school credit.

In 2017 Livewires 4-H club will be celebrating its 75th anniversary. We invite any past members and leaders to share their livewires experiences, memories, and pictures with us. We will be holding special events and activities during the year to celebrate our 75th anniversary.

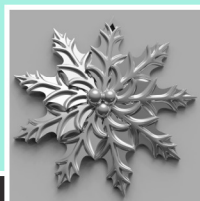
With November being 4-H month there is no better time to become educated about the organization. Membership is open to all interested youth, so if you feel you would like to get involved in this progressive organization please give Donna Simpson a call at 902-644-3465 or Kevin Nickerson a call at 902-644-3277.



## DeLong Designs Metalworking



Whale Tail Tree



Holly Snowflake



DeLong's Wreath

We are pleased to present our line of pewter Christmas ornaments at \$20 + HST each. For more information or to place an order, please contact us!

facebook.com/delongdesignsmetalworking  
delongdesigns@outlook.com  
902-298-0917



## From the Lions Den

The New Germany & Area Lions Club has continued with their community activities and fund raising throughout the fall. The Lions Express entertained young and old alike at the Michelin Family Picnic, Main Street Maples and the Caledonia Parade and Fair. The Express is always a hit!

The corned beef supper in September was described by diners as the best corned beef supper ever – so stay tuned for a repeat performance! Thanks to the many people who helped out and supported this supper fundraiser. A hearty crew of Lions cleaned up a five km stretch of Highway 10 running through New Germany as part of their Adopt a Highway project. They were pleased to report that the number of bags of garbage was down from the spring clean-up. Way to go New Germany!

The Apple Pie Project was the highlight of the fall with over ninety volunteers and the New Germany Lions producing over 1300 pies in a single day. This is a major fundraiser for the club and allows them to support large projects like the Dog Guide Program and Bonny Lea Farm as well as local individuals who are in need of support for medical supplies, glasses, hearing aids, heating and transportation needs. A huge thank you to the volunteers who peeled, rolled, sliced and spiced with us – we could not do it without you.



The Lions Club also sponsored a Merchandise Bingo to support a local family who needs financial support at this time. We are proud to support our community and proud that we are able to be there when we're needed. And we're proud of those who contributed and those who attended the bingo.

Many of the New Germany Lions attended the Fall Convention held in Lawrencetown where our King Lion Donnie Fancy received an award for Best District of NS President, Runner Up, and the club won the Rose Bowl Trophy for best club participation in the convention. Well deserved honours for the club!

As the autumn season slides into winter, we will continue to support our community and its citizens so mark your calendars for our next fundraiser – a turkey supper being held at the Anglican Church Hall on Saturday, November 12, from 4:30-6:30. Tickets will be \$12.00 at the door. Hope to see you there.

~ Lion Deb Featherby

### Mumma's Stink Pot & Grill

Open Friday, Saturday & Sunday  
3:00pm - 7:00pm until the end of  
November

Weather Permitting



We **Thank You** for a Wonderful 2016  
Happy Holidays to everyone.  
We look forward to seeing you in 2017.

*Come Get Your  
Stink On!*



President Donnie Fancy receiving his award at fall convention



The Lions highway clean-up crew

## *New Germany Resident Heads to the 121<sup>st</sup> Boston Marathon*

Once again, our very own New Germany resident, **Janis Power**, will be running in the famous **Boston Marathon**, which is the longest running marathon in the world! **April 17, 2017** will be the 121<sup>st</sup> year of the event which will include **30,000 runners** representing about **100 different countries**. Entrants into this race must run a qualifying time in a sanctioned event in order to be accepted. Janis completed the Johnny Miles Marathon (42.2kms) in New Glasgow in June of this year with a time of **3:55:47**. This time was 4min 13sec faster than her qualifying time of 4:00:00. (Qualifying times are determined by age and gender). During this race she also finished first in her category and 4<sup>th</sup> overall woman!

Janis had a very successful past 2 years in her running events. She ran in 14 races across the province and finished top 3 in all of those events (9–First Place; 2–Second Place; 3–Third Place). She has done this in all distances (Full Marathon–42.2kms; Half-Marathon–21.1kms; 10kms; 5kms). In 2014, she also ran an Ultra-Marathon, 50kms, in 4hrs 34min, coming in 1<sup>st</sup> in her category and 2<sup>nd</sup> overall female. Also, in 2015, Janis ran in her first Boston Marathon and ran a personal best time of 3:48:45! Many of our readers will remember this from stories published in previous newsletters. She qualified for this event at the Ottawa Marathon in May 2014. Janis also ran in the PEI Marathon in 2011.

Janis has been a runner for most of her life, participating in school running events and also when she attended university. She continued running as a form of exercise throughout her adult life, but didn't start running in "real" running events until 2010 when she ran her first Half-Marathon, 21.1kms, in Halifax. Since then she has raced in all distances from 5kms up to 50kms. In 2012 she had surgery on her right knee to repair what was thought to be a torn meniscus. The surgeon discovered that the meniscus was indeed torn! It was so damaged that the entire meniscus had to be removed (there is no cartilage in her right knee joint!) There was also a very significant amount of arthritis in the joint. The doctor advised her that she would no longer be able to run long distances. However, with a few days for reflection following her surgery, she decided that "the doctor doesn't know me!" Since that time she has participated in many races, has qualified for Boston 3 times, and ran in the Boston Marathon in 2015!



*"I have worked very hard and have run many, many kms, to achieve this goal. I've been supported and encouraged by many along the way (comments from folks on FB, waves and honks from folks passing by as I put in my kms of training, encouragement from family, friends, my coach and massage therapist). On April 17, 2017 as I run I will not be running solo. As I did in 2015, I will be proudly taking and representing my community, NG, NS with me. "New Germany" will not only be displayed on my running singlet, but will also be felt, in spirit and positive energy, as I run the 42.2kms course in Boston. I am looking forward to, as I did in 2015, hearing from the crowds, as onlookers read the name on my shirt! "Go New Germany, Canada, Go!" Until then, I'll see you on the road!"*

***"Dream a dream, and make it come true!"***

### **TONY DANIELS CARPENTRY**

RR # 3 New Germany

B0R 1E0

Additions • Renovations • Roofing • Siding

Flooring • New Construction

For a Job Done Right The First Time

Phone (902) 644-3089

Fax (902) 644-1220

Free Estimates

### **NGAPS Meeting**

NGAPS holds our regular monthly meetings the first Tuesday of the month. Everyone with an interest in our community is welcome to join. Please check website for location or call 902-644-2922 for more information.



### *New Germany and Area Medical Centre*

*Pap Clinic (by appointment only)*

*Jennifer Rijs, Nurse Practitioner*

Thursday January 26, 2017

Appointments may be made by any woman living in the New Germany area wishing to have a Pap test.

Phone 644-2361 with a valid Health Card.



## BEGINNER FLY CASTING SCHOOL

Sponsored by the LaHave River Salmon Association

**TUESDAYS EVENINGS FROM 7-9PM**

**Courses Start on:**

**January 10 for 4 weeks**

**February 7 for 4 weeks**

**March 7 for 4 weeks**

For Adults and Children 13 & older

**BRIDGEWATER BAPTIST CHURCH**

Glen Allen Drive

Registration- \$35 for a 4 Week Rotation

All Necessary Equipment provided

**BUCKY DEVINE    GEORGE TAYLOR**  
902-543-5387    902-527-2140

[redevine@ns.sympatico.ca](mailto:redevine@ns.sympatico.ca)

[davmat@eastlink.ca](mailto:davmat@eastlink.ca)

For further information please contact Bucky or George at the above numbers



## Countryside Christmas



November 26 to December 4

### Don't forget...

NGAPS pins and postcards are available at Village Glassworks or from NGAPS members.

Great gifts from home to give while traveling or treat friends and family who are visiting our area.

*Best Wishes for the Holiday Season!*

**BERNADETTE  
JORDAN**

MP South Shore—St. Margaret's

129 Aberdeen Rd., Suite 106,

Bridgewater, NS, B4V 2S7

Phone: 902.527.5655

[bernadette.jordan@parl.gc.ca](mailto:bernadette.jordan@parl.gc.ca)



## Crabapple Creek

Avon • Antiques • Crafts

Melissa Eisnor

3360 Parkdale Rd., Lunenburg Co.

902-644-3639 off. • 902-521-0350 cell

### Open during Countryside Christmas

November 26th to December 4th

Serving a variety of homemade Cheesecake \$5 per slice (including a beverage)

Quaint Country style shop with ANTIQUES, AVON, LOCAL QUILTING, LOCAL CRAFTS, WATKINS and TUPPERWARE

### Specials:

- Homemade quilted POTHOLDERS 3 pair for \$24
- Avon BUBBLE BATH \$5 a bottle
- All In store CLOTHING tax free



## Municipal Recreation News

**Lunenburg Municipal Recreation** has opportunities for you & your family throughout the Municipality!

**Men’s Drop-in Basketball** – Tuesdays, 7:30 – 9 pm, Bayview School. \$5 per night.

**Women’s Drop-in Basketball** – Wednesdays, 6:30 – 8:30 pm, YMCA. FREE!

**Christmas Shopping Bus Trip to Hfx.** – November 16, 8 am – 8 pm. Waiting list.

**Adventure Tales** – Friday, November 18, 7 pm, at the MARC. Speakers share their adventures that will inspire you.

**Red Cross Babysitter Course** – Saturday, November 19, 9 am – 4 pm, Mahone Bay Centre. \$35

**Municipal Matters Community Events** listing deadline November 18. Call in your event to be included.

Community organizations may also submit events for listing on the Community Calendar on

[www.modl.ca](http://www.modl.ca)

Check out South Shore Connect to list your programs and events, visit [www.southshoreconnect.ca](http://www.southshoreconnect.ca)

The Municipality is pleased to support New Germany’s Countryside Christmas!

**NEW Family Lantern Walk** – Tuesday, November 29, 6 pm, make your lantern inside Epworth United Church, New Germany, then walk among the Main St. Maples. All supplies provided. FREE! Call 541-1343 to sign up.

**Seniors Christmas Party** – December 8, 11 am – 2 pm, Oakhill Fire Hall. Waiting list.

**Family Christmas Wreath Making** – Sunday, December 11, 3 – 5 pm MARC, Day-spring \$5 pp family.

**Winter Solstice Lantern Walk** – Wednesday, December 21, 5:30 pm, MARC, Day-spring. FREE!

Visit [www.modl.ca](http://www.modl.ca) for a full listing of recreation programs. “Like” us on Facebook!

We welcome your ideas for winter/spring programs in our community; please contact Janice Rand at 541-1335.



Little Bluff Hike  
October

# freshmart®

**Your Neighbourhood Grocer**

**4988 Hwy. 10,  
New Germany  
644-3272**

### PRICES from November 10th to November 16th

<b>FRESH WHOLE CHICKEN</b> \$1.99 LB/ \$4.39kg	<b>FRESH PORK SIDE RIBS</b> \$2.99LB/ \$6.59kg	<b>PC SODA TINS</b> 12 X 355ML \$2.99	<b>PC DRY ROASTED PEANUTS</b> 700g      \$3.99
<b>PC SHREDDED CHEESE</b> 300g      \$4.99	<b>FIVE A LIVE &amp; FRUITOPIA</b> 1.75LT      4/ \$5.00	<b>ACTIVIA YOGURT</b> 16 X 100g \$4.99	<b>FOLGERS COFFEE</b> 920g Tin \$7.99

Saturday December 3rd

## Customer Appreciation Day - 11am to 4pm



JOIN US FOR **FREE REFRESHMENTS** including

COFFEE, EGGNOG, CRANBERRY JUICE, FRUIT CAKE, CHERRYPOUND CAKE, COOKIES.

**FREE DRAW, ENTERTAINMENT** and **SANTA** WILL BE ARRIVING AT 1:00pm until 3pm

Free treat bags for the children; bring a camera and get your picture taken with Santa.



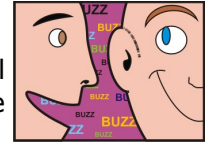
## Business Buzz

There are often many changes in the business community in our area. This column notes a few of the highlights.

Probably something everyone has noticed is the new barn being build at Delong's as part of their egg enterprise.

Stop by and say hello to the new pizza makers at Charlie's Pizza and Burgers.

Delong's Wreath Room will soon be open for the season and the Christmas tree trucks will be on the move delivering trees to new homes where they will share their forest fragrance and Christmas cheer.



MODL Little Bluff Hike October

**GREG SELIG**  
 36 Barss Corner Rd  
 New Germany, N.S.  
 B0R 1E0  
 902 644 2153

Upcoming Shows:  
 Nov. 13, Masonic Hall B'water  
 11am-3:30pm  
 Nov. 17, Anglican Church  
 B'water 6-9pm  
 Dec. 4, New Germany  
 Elementary, 1-4pm

Pampered Chef - Independent Consultant  
 pamperedchef.ca gdselig@ns.sympatico.ca

Merry Christmas and Happy New Year!  
 from  
**HOLMESTEAD CHEESE**

Manufacturer of Feta Cheese and distributor of Mediterranean foods.

- Olive Oils •
- Kalamata Olives •
- Sheep's Milk Cheeses •



Offering Wholesale & Retail products

Come visit our Retail Store - Open 7 days a week

*All Customers Receive a Free Ricotta Slice!*



**2439 Harmony Road, Aylesford**  
**902-847-9034** holmsteadcheesesales.com

Find us on

## Countryside Christmas House Tours

November 27th 2pm to 7pm

It wouldn't be Christmas without **you** in our homes!

As part of our *Countryside Christmas* we are offering inside tours of three beautifully decorated homes, an outside tour of one of the most popular Christmas homes in this area, a Chriskindmarkt Christmas Market and your own private time at Crabapple Creek ~ all for **\$10.00**

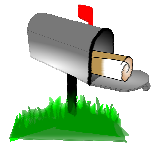
- Carla & Roger Carver**
- Heather & Bruce Veinotte**
- Shelley & David Zinck**
- The Wool Room @ Aspen Grove Farm**
- Crabapple Creek**

By ticket only, tickets available from Village Glassworks 902-644-3185, Cathy 902-644-2922, Holly 902-523-0488 or Lisa 902-521-0507

Profits from this event will be shared among the breakfast programs at NGES and NGRHS and the projects of NGAPS.

## ***New Germany Post Office Food Bank Drive***

November 21st to 25th



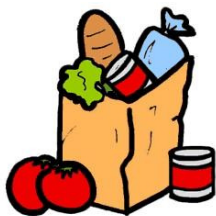
You can drop off donations at the New Germany Post Office or in your mailbox to be picked up by the New Germany & Springfield Rural Mail Drivers.

### **Customer Appreciation Day**

December 2nd

Treats and a chance to win a prize with a food bank donation.

Thanks for your support.



## **New Germany Building Supplies**

4422 Highway 10, New Germany  
644-2761

### **No Power?**

We have various sizes of generators in stock.



Join us for **Cider Saturday** on December 3rd

Serving cider and cookies.



**20% off of Christmas décor.**

## **Mader's Clover Farm Supermarket**

1383 Barss Corner Road Phone: 902-644-2440

*Rural Life and Cottage Supply Centre*

*Did You Know We Carry The Following Items?*

*Wilson's Gasoline, Diesel, & Furnace Fuel; Lubes, Propane Exchange, Hardware, Shur Gain Livestock Feeds, Culligan Water, Ice, Kindling, Meats, "Mader's" Own Gluten Free All Pork Sausage, Produce and Groceries.*



**Join us at the Store on November 26<sup>th</sup>  
"Customer Appreciation Day"  
Free Giveaways & Great In-Store Specials**



## NGAPS Community Tree Lighting

6:30pm Thursday, December 1st

at the Lions Park and St John's Hall  
in New Germany.

You are invited to the lighting of the  
Community Christmas tree donated by  
**Brenton Holland**. Join NGAPS in the  
Church Hall for a holiday snack as the  
Children's Choir performs and leads us  
in singing Christmas carols.

8pm a **FREE** Christmas Zumba led by  
Holly Conrad will follow the evening's  
festivities in St John's Hall

## Christmas Festival New Germany

Sunday, December 4th  
1:00 – 4:00 p.m.  
**New Germany Elementary  
School**



\* **Monetary and non-perishable items gratefully  
accepted for the New Germany Food Bank.**

**Santa's Village, letters for Santa,  
Lion's Club Train, Mini  
Trees, Face Painting,  
Hot Chocolate, Canteen,  
Whimsical Children's  
Store, Market, and  
MORE!**



Sponsored by the Municipality of  
the District of Lunenburg in part-  
nership with New Germany Ele-  
mentary Home & School and com-  
munity organizations.  
For information contact Cathy  
Moore, 644-2922, Jennifer  
Hayward, 644-2558 or Michelle  
Greek, 644-2303



**Note** - Light Exchange has been discontinued

## Village Glassworks

4928 Highway 10  
New Germany  
902-644-3185  
villageglassworks.ca  
FB: VillageGlassworksNS



Stained glass panels, lamps,  
mirrors and suncatchers, all  
designed and crafted on-site.

Other specially created  
products including pottery,  
quilting, pewter,  
jewellery, wood turnings.

You are invited to our  
**Christmas Open House**  
Dec. 2 & 3  
10am to 5pm

with **Imagination in Motion**  
Christmas Crafts for Children.  
Create a one of a kind Christmas  
ornament using glass!

Refreshments, Specials, Draw.

Janis with **Beanies for Boston**  
Michelle and **Discovery Toys**



Shop locally for beautiful handcrafted gifts  
created for the unique people in your life.

Your all occasion shoppe.

## NGAPS Christmas Market at NGES

December 4th  
1-4pm

Shop from these vendors & more

- Pampered Chef Greg Selig
- Nature's Natural Solutions Holly Conrad
- Crochet Creations Jennifer Gendron
- Wooden Spoons and more TerriDwayne Foster
- Emulyah All-Natural
- Epicure Megan McCarthy
- DeLong Designs Metalworking
- Portraits in Wood & Stained Glass Designs
- NGRHS Quebec Trip Fundraiser Jasmine Sophia Spidle
- Avon Sharon Slauenwhite
- Homemade Christmas Items by Mona Lantz
- Mary Kay Maxine G. Veinot
- Sunset Gourmet Kirby Gendron
- Felted and craft items by Vicki Rhodenizer
- Arbonne with Kandi
- Courtney Bruhm Designs

Limited number of spaces still available.  
Contact Michelle Greek for more information 902 644 2303



## Whimsical Store

**December 4th**  
**1-4 pm During the Christmas Festival**

In the Community Room of NGES

Children can buy small gifts, wrapped and ready for under the tree. Proceeds for shipping Operation Christmas Child.

Everyone may shop between 3-4pm

Hosted by Operation Christmas Child Committee of Mount Calvary Lutheran Church

## Wreath Making for NGES

NGES Home and School Association will be making wreaths and enjoying Christmas snacks together at 7pm Monday, November 29th in the Community Room at NGES.

A wreath is being made for each class to decorate. The wreaths will be auctioned off at the Christmas Festival at NGES on December 4th.

All proceeds to the Home and School Association.



## Lively Munchkins Christmas Party!

**9:30-11am**

**November 29th**

**Ages 4 and under**

**Barss Corner Community Hall**

**\$4 per child**

**Loosely structured activities**

**Christmas snack provided**

**Imagination in Motion Facebook page for more info**

**Or contact Michelle Greek  
902 298 9547**

## Family Movie Night

Saturday, November 26th  
Rosedale Home for Special Care



# 6pm Prep and Landing

Snacks provided by NGAPS

Wear your Christmas Pyjamas and bring a cozy blanket



# Countryside Christmas

## **Saturday, Nov 26th**

7am-6pm Customer Appreciation at Mader's Cloverfarm Supermarket, free giveaways and in store specials

7-11am Breakfast at NG Legion - \$8 per adult, \$5 per child, proceeds for the Legion

2-4pm Christmas Tea, Craft and Bake Sale at Springfield United Baptist Church - Adults \$5, Children \$2, proceeds to the church

11am -2pm Christmas Penny Auction at Pinehurst Hall, proceeds to the hall

6pm Family Movie Night "Prep and Landing" at Rosedale Home for Special Care, wear your Christmas jammies, FREE

9pm Dance @ Anglican Church Hall, \$5 per person.

**Sunday, Nov 27th** 2-7pm NGAPS Christmas House Tours (by ticket) and 1-4pm Christkindlmarkt, weather permitting

## **Monday, Nov 28th**

10am Tree Decorating at Rosedale Home for Special Care

7pm Merchandise Bingo at Pinehurst Hall, proceeds to the hall

7pm Home and School Association Creating Wreaths for NGES. Creating one wreath per classroom for the class to decorate. Wreaths will be auctioned off at the Christmas Festival on Dec 4th.

## **Tuesday, Nov 29th**

10am Christmas Lively Munchkins at Barss Corner Community Hall, ages 4 and under, \$4 per child, loosely structured activities; snack and craft provided

2pm Advent Service at Rosedale Home for Special Care

6pm Family Lantern Walk, Main Street Maples in NG, FREE



## **Wednesday, Nov 30th**

7pm New Germany Garden Club and Rosedale residents are making table arrangements for Rosedale.

## **Thursday, Dec 1st**

2-4pm Christmas Tea at St John's Anglican Church Hall (Storm date Dec 2nd)

6:30pm NGAPS Tree Lighting, Carol Sing, Children's Choir performance, light refreshments, FREE

8pm Christmas Zumba at St John's Anglican Church Hall, FREE



# Countryside Christmas

## Friday, Dec 2nd

9am New Germany Post Office Food Bank Drive and Open House. Bring your food bank donations. Light refreshments.

10am Village Glassworks Open House with Imagination in Motion Christmas Crafts for Children. Create a one of a kind Christmas ornament using glass. FREE for children.

1-4pm NSLC Tastings

4-7pm Backwoods Boys Redneck Christmas Party, framed family pic with Santa for \$6; free toy for children who visit Santa; free baked goods and snacks

7pm Memorial Tree Lighting at Walden Fire Department

7:30pm Christmas Jam Session at Upper Cornwall Community Hall

7:30pm Darts at New Germany Legion; wear your Christmas shirt



## Saturday, Dec 3rd

7-11am Candlelight Breakfast at Pinehurst Hall. Adults \$8, Children \$5, Ages 5 and younger FREE; proceeds to the hall

10am Village Glassworks Open House with Imagination in Motion Christmas Crafts for Children. Create a one of a kind Christmas ornament using glass. FREE for children

10am Cider Saturday at New Germany Building Supplies. FREE cider and cookies

1-3pm Customer Appreciation at the Freshmart. Santa visiting with goodies; entertainment; refreshments

1-4pm NSLC Tastings

4-7pm Backwoods Boys Redneck Christmas Party, framed family pic with Santa for \$6; free toy for children who visit Santa; free baked goods and snacks

7:30pm, Christmas Bingo at North River Community Hall, proceeds to the hall

## Sunday, Dec 4th

1-4pm Christmas Festival at NGES and NGAPS Christmas Market

1-4pm Whimsical Store at NGES hosted by Mount Calvary Lutheran Church

## Happening Daily

Crabapple Creek open Nov 26, 28, 29, Dec 1, Dec 3 & 4, 10-2pm; Nov 27 12-7pm & Dec 2 10-5

Backwoods Boys open daily 10am-9pm with huge sales

Charlie's Pizza Countryside Christmas Specials: 16" 3 regular toppings \$10.99 or 12" pepperoni pizza and 12" garlic fingers for \$13.99



# The Back Page

## Info about this Newsletter

New Germany Area Promotion Society  
 New Germany, N.S. B0R 1E0  
 E-Mail: [ng\\_cap@ns.sympatico.ca](mailto:ng_cap@ns.sympatico.ca)  
 Phone: (902) 644-2922  
 Cathy Moore, Chair  
 Greg Selig, Vice Chair  
 Madelyn Bowers, Treasurer  
 Michelle Greek, Secretary

### Next Issue:

Will be early February. We would like to hear your story ideas. Please contact us at the address or phone number on this page.

**Are you a business owner?  
 Do you have a great product or  
 service you want to advertise to the  
 people in our area?**

You can advertise in this newsletter!

- > Catch the eye of your neighbours
- > Support the local community
- > Make new connections....all for one reasonable price.

Sample Ad Sizes	
2" x 3.5"	\$20
Quarter Page	\$45
Half Page	\$90

**New Germany Connections was put together entirely by NGAPS volunteers and community supporters. Ads were paid for by advertisers. Please support our local businesses, because without them there would be no publication.**

NGAPS publishes New Germany Connections five times a year - mid February, mid April, mid June, early September and early November. Watch for yours with your flyers. It is also available in colour on our web site or can be picked up at New Germany Freshmart, Mader's Clover Farm Supermarket, Village Glassworks and many other places in our area.



### Thanks for entering our contest!

In the September issue of the Newsletter, we gave you the chance to win a \$20.00 gift card from any one of our advertisers - your choice. The draw was made and the winner was Shirley Moore. She chose a gift certificate from Village Glassworks. Congratulations Shirley.



## Volunteer Connections

Is your group or organization looking for new members or volunteers? Send us information about your needs and we will include your request in our newsletter as space permits. You can send your information to NGAPS by mail or email to the address above.

**Advertising Information:** You can advertise in this newsletter. We deliver it to all the households and businesses in the New Germany, Barss Corner and Springfield Post Office areas. Single ad sizes vary but can be 1' x 7" or 3.5" x 2" depending upon space and layout. Price per single ad is \$20.00. Multiple ad sizes are available. The revenue from the advertising helps to offset the cost of printing and distributing this Newsletter. Thank you to our advertisers for their assistance.

New Germany Connections is also available on the community web site, in colour, with all ads included. **Community events and local businesses are listed on the web site for free.** Please contact [ng\\_cap@ns.sympatico.ca](mailto:ng_cap@ns.sympatico.ca) Next issue will be published early February. Ads are limited so they are offered on a first come, first served basis. Please contact NGAPS at the above addresses to book your space.